

# MOTORIZED PULLEY 630M & 630H

Ø 630 mm

To match your requirements in diameter 630 mm, our product range offers two different loading performances for your BULK applications:

- 630M and
- 630H

You have a choice.

Therefore, it is important to notice the differences to choose the right type of pulley for the right application based on estimated belt tension (radial load) = T1+T2. The actual radial load **MUST** be **LESS** than the max. allowable radial load shown in this catalogue.

Be aware of increased belt tensions using *multi-ply thick heavy belts* and/or larger belt widths.

If you do not find the belt tension needed in this diameter, you might have to choose a larger one.

Except for the fact that motor/gearbox of 630M originates from 500H, both types – 630M and 630H – are designed for HEAVY DUTY applications. They provide the necessary torque and belt pull.

Both pulleys are designed for tough, irregular, extreme and brutal working conditions.

## STANDARD SPECIFICATION of Motorized Pulley

- Crowned mild steel Ø 630 mm steel shell painted yellow - min. layer of 60 µm
- Bolted cast iron bearing housings and covers, all painted yellow – min. layer of 60 µm
- Mild steel shafts
- Shaft sealing system - degree of protection IP66/67 (EN60034-5)
- Cast iron terminal box painted yellow – min. layer of 60 µm
- 3-phase induction motors with thermal protector
- Voltage: 3-phase single voltage. Most common voltages available. Please specify!
- Motor winding insulation Class F+H
- Dynamically balanced rotor
- Two oil plugs each fitted with a magnet to filter the oil
- Yellow painted cast steel mounting brackets – one type AL & one type ALO
- Oil change recommended every 20.000 operational hours
- Maximum RL – Please inquire!
- Non standard RL's available
- To be used in horizontal positions ±5 degree only!

## SEMI-RUST-FREE options

Stainless steel version or rust-resistant version on request -

For an optimum design of the correct anti-corrosion performance, we need the properties of the materials being conveyed. Our sales team will offer you the best available solution.

**When ordering, please specify the required voltage, electrical connection, options, brackets and idler pulleys.**

- Environmental conditions: page 68/69
- Technical precautions: page 71 ff.,
- Optional extras: page 51,
- Connection diagrams: page 87 ff.

# MOTORIZED PULLEY 630M & 630H

## Optional extras

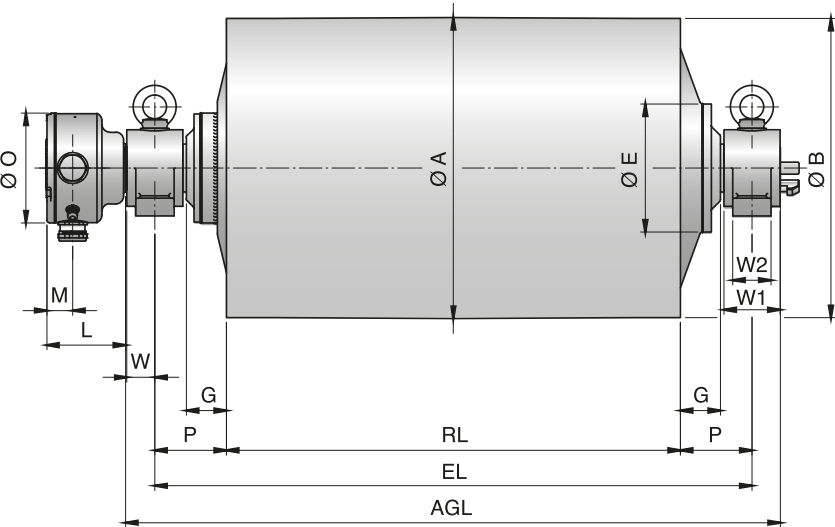
SPECIFICATIONS	630M	630H
Dust explosion proof Motorized Pulleys - ATEX 95 - Zone 22 - for applications handling of dusty grain etc. According to European 2014/34EU	On request!	On request!
Re-greasable labyrinth seals - mild steel	x	x
Black rubber lagging - STANDARD specifications: - Smooth lagging - Hardness 60 ±5 Shore A - Diamond lagging - Hardness 60 ±5 Shore A	o 10 mm 10 mm	o 10 mm 10 mm
White smooth rubber lagging (FDA). Oil, fat & grease resistant	x	x
SPECIAL lagging available on request - e.g. hot vulcanized, ceramic etc.	x	x
External brake shaft for connection to mechanical brake	x	x
Mechanical backstop	x	x
Insulation class F - Allowable ambient temperature: -20°C-+40°C	Std.	Std.
Insulation class H with synthetic oil	x	x
Parallel shell	x	x
Thermal protector	Std.	Std.
IP66/67 cast iron terminal box painted yellow	Std.	Std.
Shaft sealing system - degree of protection IP66/67 (EN60034-5)	Std.	Std.
3-phase single voltage (3 x 400V) or (3 x 690V), 50 Hz, with +/-10% tolerance - DIN IEC 38	Std.	Std.
Special voltages - 50 and/or 60Hz      Please specify!	x	x
CSA approved motors - available on request only!	x	x
Electromagnetic brake      Min RL dimension increases by (mm)	100	-

x = Optional extras  
o = Available as option with certain limitations. Please refer to Technical precautions pages 71 ff.  
Std. = Fitted as standard

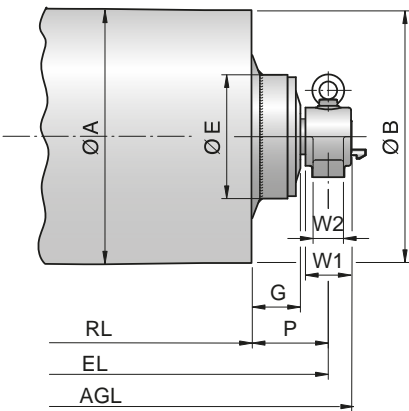
# MOTORIZED PULLEY 630M & 630H

Ø 630 mm

Motorized Pulley with terminal box

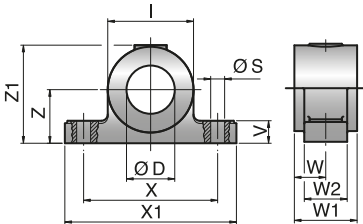


Idler Pulley UT500H / UT502H



Type	A mm	B mm	C mm	D mm	E mm	G mm	L mm	M mm	O mm	P mm
630M	630	626	-	65	192	95	131	46	165	150
630M (22&30kW) / 630H	630	626	-	90	268	84	166	54	230	150

Mounting brackets  
AL65 & ALO65  
AL90 & ALO90



Motorized Pulleys	Material	Bracket description	Dimensions											Weight
Type			D mm	I mm	S mm	V mm	W mm	W1 mm	W2 mm	X mm	X1 mm	Z mm	Z1 mm	kg
630M	Spheroidal cast iron	AL65 / ALO65	65	115	23	34	45	90	60	180	240	80	141	8.0
630H	Cast steel	AL90 / ALO90	90	160	26	42	58.5	117	80	250	320	100	183	19.0

# MOTORIZED PULLEY 630M

## Ø 630 mm - 50 Hz

Motor		Nominal belt speed at Full Load 50Hz m/sec	Torque Nm	Belt Pull N	Max. Radial Load T1+T2* N	Min. RL	Type	Weight in kg for STANDARD width Dimension RL in mm (RL >2000 mm available on request)									Type of Bracket														
Power kW/HP	No. of Poles							750	800	850	900	950	1000	1050	1100	per 50 mm up to 2000															
5.50/ 7.50	8	0.63	2612	8292	46000	750	630M	395	404	413	422	431	441	450	459	9 kg	AL65/ALO65														
		0.80	2057	6530																											
		1.00	1645	5222																											
	6	1.25	1316	4178																											
		1.60	1028	3264																											
		2.00	823	2613																											
7.50/ 10.0	8	2.50	658	2089	46000	750	630M	404	413	422	431	440	450	459	468	9 kg	AL65/ALO65														
		3.15	522	1657																											
		0.80	2805	8905																											
	6	1.00	2243	7121																											
		1.25	1795	5699																											
		1.60	1402	4451																											
11.0/ 15.0	6	2.00	1122	3562	46000	750	630M	419	428	438	447	456	466	475	484	9 kg	AL65/ALO65														
		2.50	897	2848																											
		3.15	712	2261																											
	15.0/ 20.0	4	1.25	2631														8356	46000	750	630M	419	428	438	447	456	466	475	484	9 kg	AL65/ALO65
			1.60	2056														6527													
			2.00	1645														5222													
18.5/ 25.0		2.50	1316	4178	46000	750	630M	440	449	459	468	477	487	496	505	9 kg	AL65/ALO65														
		3.15	1045	3318																											
		1.60	2804	8902																											
22.0/ 30.0	4	2.00	2243	7121														46000	750	630M	430	439	449	458	467	477	486	495	9 kg	AL65/ALO65	
		2.50	1795	5699																											
		3.15	1424	4521																											
	22.0/ 30.0	2.00	2767	8784	46000	750	630M	440	449	459	468	477	487	496	505	9 kg	AL65/ALO65														
		2.50	2213	7026																											
		3.15	1757	5578																											
22.0/ 30.0	4	2.00	3222	10450														46000	750	630M	440	449	459	468	477	487	496	505	9 kg	AL65/ALO65	
	2	2.50	2634	8362																											
		3.15	2090	6635																											

\* T1+T2 value is valid for shortest available RL – in case of any questions please contact Rulmeca sales.  
Note: for MP 630M & H electromagnetic brake is not possible

We offer idler pulleys with the dimensions to match our motors on request.

Further product details:



[https://www.rulmeca.com/contenuti/qr\\_code/english/500H-800H.pdf](https://www.rulmeca.com/contenuti/qr_code/english/500H-800H.pdf)

# MOTORIZED PULLEY 630H

Ø 630 mm - 50 Hz

Motor		Nominal belt speed at Full Load 50Hz m/sec	Torque Nm	Belt Pull N	Max. Radial Load T1+T2* N	Min. RL	Type	Weight in kg for STANDARD width Dimension RL in mm (RL >2000 mm available on request)									Type of Bracket
Power kW/HP	No. of Poles							950	1000	1050	1100	1150	1200	1250	1300	per 50 mm up to 2000	
22.0/ 30.0	8	1.00	6583	20899	73600	950	630H	805	818	830	843	855	865	878	891	13 kg	AL90/ALO90
		1.25	5265	16714													
		1.60	4113	13057													
		2.00	3290	10445													
		2.50	2632	8356													
		3.15	2089	6632													
30.0/ 40.0	8	1.25	7179	22791	98100	950	630H	825	838	850	863	875	885	898	911	13 kg	AL90/ALO90
		1.60	5609	17807													
		2.00	4487	14245													
		2.50	3589	11394													
		3.15	2849	9045													
37.0/ 50.0	6	1.60	6920	21969	98100	950	630H	825	838	850	863	875	885	898	911	13 kg	AL90/ALO90
		2.00	5534	17569													
		2.50	4427	14054													
		3.15	3513	11153													
45.0/ 61.0	4	2.50	5384	17092	88300	950	630H	845	858	870	883	895	905	918	931	13 kg	AL90/ALO90
		3.15	4273	13565													
		4.00	3365	10683													
55.0/ 75.0	4	2.50	6584	20902	88300	950	630H	845	858	870	883	895	905	918	931	13 kg	AL90/ALO90
		3.15	5223	16581													
		4.00	4113	13057													

\* T1+T2 value is valid for shortest available RL – in case of any questions please contact Rulmeca sales.

Note: for MP 630M & H electromagnetic brake is not possible

We offer idler pulleys with the dimensions to match our motors on request.